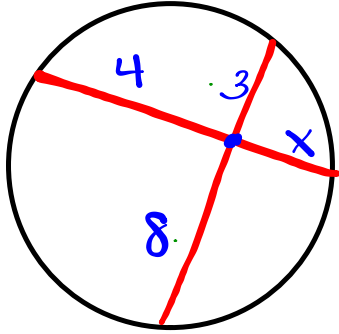


piece  $\times$  piece = piece  $\times$  piece

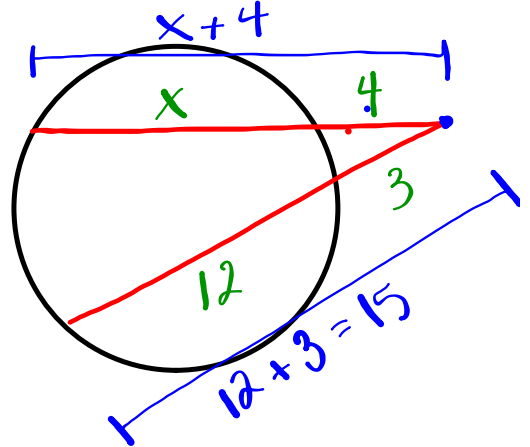


$$4 \cdot x = 8 \cdot 3$$

$$4x = 24$$

$$x = 6$$

whole  $\times$  outside = whole  $\times$  outside



$$(x+4) \cdot 4 = 15 \cdot 3$$

$$4x + 16 = 45$$

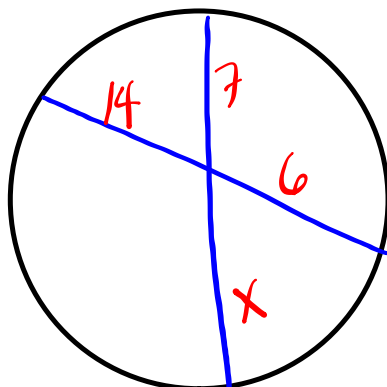
$$\quad -16 \quad -16$$

$$4x = 29$$

$$\frac{4x}{4} = \frac{29}{4}$$

$$x = 7.25$$

ex. 1



$$14 \cdot 6 = 7 \cdot x$$

$$\frac{84}{7} = \frac{7x}{7}$$

$$x = 12$$

